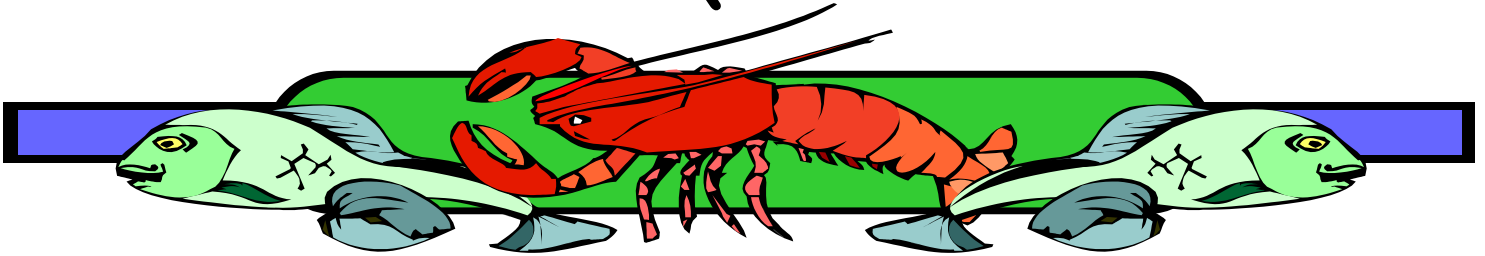


# HAWAII AQUACULTURE



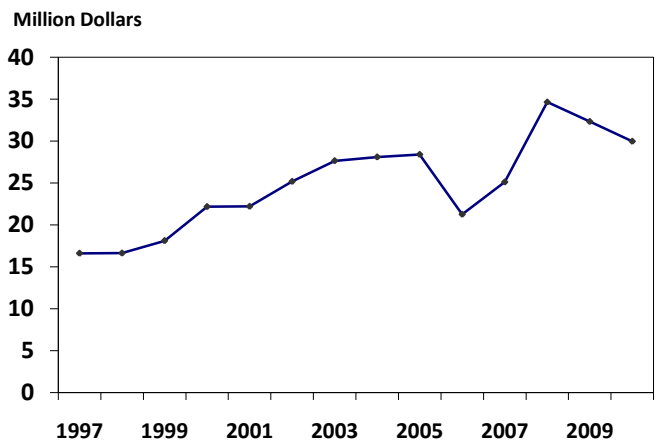
Frequency: Annual

Release: August 18, 2011

## HAWAII AQUACULTURE TOTALED \$30.0 MILLION IN 2010

Hawaii grown aquaculture totaled \$30.0 million in 2010, dropping 7 percent from the previous year and falling for the second year. Algae sales accounted for 56 percent of the value and amounted to \$16.7 million. The 'other' category which includes seed stock, brood stock, fingerlings, and other items counted by number, accounted for 33 percent of the total or \$9.8 million and increasing 26 percent from a year ago. The ornamental category was pegged at \$1.8 million or 6 percent of the total. Finfish sales by weight totaled \$1.0 million contributing 3 percent to the total. Shellfish sales by weight was valued at \$575 thousand, making up the remaining 2 percent of the total.

Hawaii Aquaculture: Value, State of Hawaii, 1997-2010



**NASS**

FACT FINDERS FOR AGRICULTURE  
UNITED STATES DEPARTMENT OF AGRICULTURE

National Agricultural Statistics Service  
USDA, Hawaii Field Office

1428 South King Street  
Honolulu, Hawaii 96814-2512  
PH (808) 973-9588 FAX: (808) 973-2909  
Internet address:  
[http://www.nass.usda.gov/Statistics\\_by\\_State/Hawaii/index.asp](http://www.nass.usda.gov/Statistics_by_State/Hawaii/index.asp) or scan the Quick Response Code below



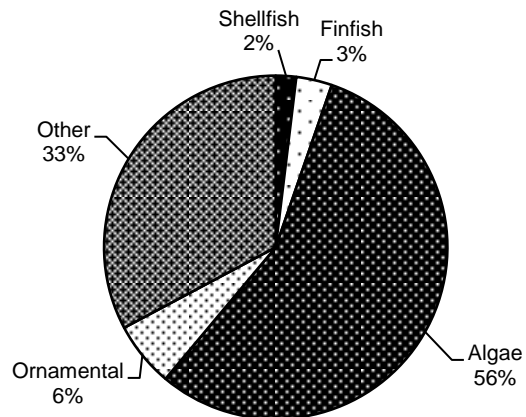
**Mark E. Hudson**  
Director

**Regina Hidano**  
Agricultural Statistician

**Joyce Jay**  
Statistical Assistant

Contributing:  
**Hawaii NASDA Enumerators**

## Aquaculture: Percent of Total Sales, State of Hawaii, 2010



AQUACULTURE: Number of Operations, Production, and Value, by Counties, 2006 - 2010									
Year	Operations	Production		Value					
		Shellfish	Finfish	Shellfish	Finfish	Algae	Ornamental	Other <sup>1</sup>	Total
	<i>Number</i>	<i>----- 1,000 pounds -----</i>		<i>----- 1,000 dollars -----</i>					
<b>State</b>									
2006	80	180	426	2,351	2,388	11,914	345	4,259	21,257
2007	70	65	533	520	4,583	10,941	2,424	6,642	25,110
2008	70	32	1,311	261	7,022	15,740	3,346	8,281	34,650
2009	70	56	821	420	4,447	16,995	2,671	7,797	32,330
<b>2010</b>	<b>75</b>	<b>76</b>	<b>211</b>	<b>575</b>	<b>1,012</b>	<b>16,725</b>	<b>1,837</b>	<b>9,821</b>	<b>29,970</b>
<b>Counties:</b>									
<b>Hawaii</b>									
2006	25	103	2	1,834	2	2	2	2	17,470
2007	25	2	2	2	2	2	2	2	20,013
2008	35	2	2	2	2	2	2	2	27,836
2009 <sup>3</sup>									
<b>2010<sup>3</sup></b>									
<b>Honolulu/Kauai/Maui</b>									
2006	55	77	2	517	2	2	2	2	3,787
2007	45	2	2	2	2	2	2	2	5,097
2008	35	2	2	2	2	2	2	2	6,814
2009 <sup>3</sup>									
<b>2010<sup>3</sup></b>									

<sup>1</sup> Items not sold by weight which includes number count for example seed stock, brood stock, and fingerlings. <sup>2</sup> Data not shown separately to avoid disclosure of individual operations but combined and included in the State total. <sup>3</sup> County estimates not published due to reduction-in-force but combined and included in the State total beginning 2009.